



TAI-SAW TECHNOLOGY CO., LTD.

No. 3, Industrial 2nd Rd., Ping-Chen Industrial District,
Tao-Yuan, 324, Taiwan, R.O.C.

TEL: 886-3-4690038 FAX: 886-3-4697532

E-mail: tstsales@mail.taisaw.com Web: www.taisaw.com

Product Specifications Approval Sheet

Product Name: 480MHz IF SAW Filter (BW=15 MHz)

TST Parts No.: TB0714A

Customer Parts No.: _____

Customer signature required
Company: _____
Division: _____
Approved by : _____
Date: _____

Checked by: _____ Kazuma Lee *Kazuma Lee*

Approval by: _____ Andy Yu *Andy Yu*

Date: _____ 2018/12/10

1. Customer signed back is required before TST can proceed with sample build and receive orders.
2. Orders received without customer signed back will be regarded as agreement on the specifications.
3. Any specifications changes must be approved upon by both parties and a new revision of specifications shall be released to reflect the changes



TAI-SAW TECHNOLOGY CO., LTD.

No.3, Industrial 2nd Rd., Ping-Chen Industrial District,
Tao-Yuan, Taiwan, R.O.C.

TEL: 886-3-4690038 FAX: 886-3-4697532

E-mail: tstsales3@mail.taisaw.com Web: www.taisaw.com

SAW Filter 480MHz (SMD 5.0×5.0 mm)

MODEL NO.: TB0714A

Rev. NO. 2.0

A. MAXIMUM RATING:

1. Input Power Level: 10 dBm
2. Operating Temperature: -20 °C ~ +70°C
3. Storage Temperature: -40 °C ~ +85 °C
4. Moisture Sensitivity Level: Level 1 (MSL 1)

RoHS Compliant
Lead free
Lead-free soldering

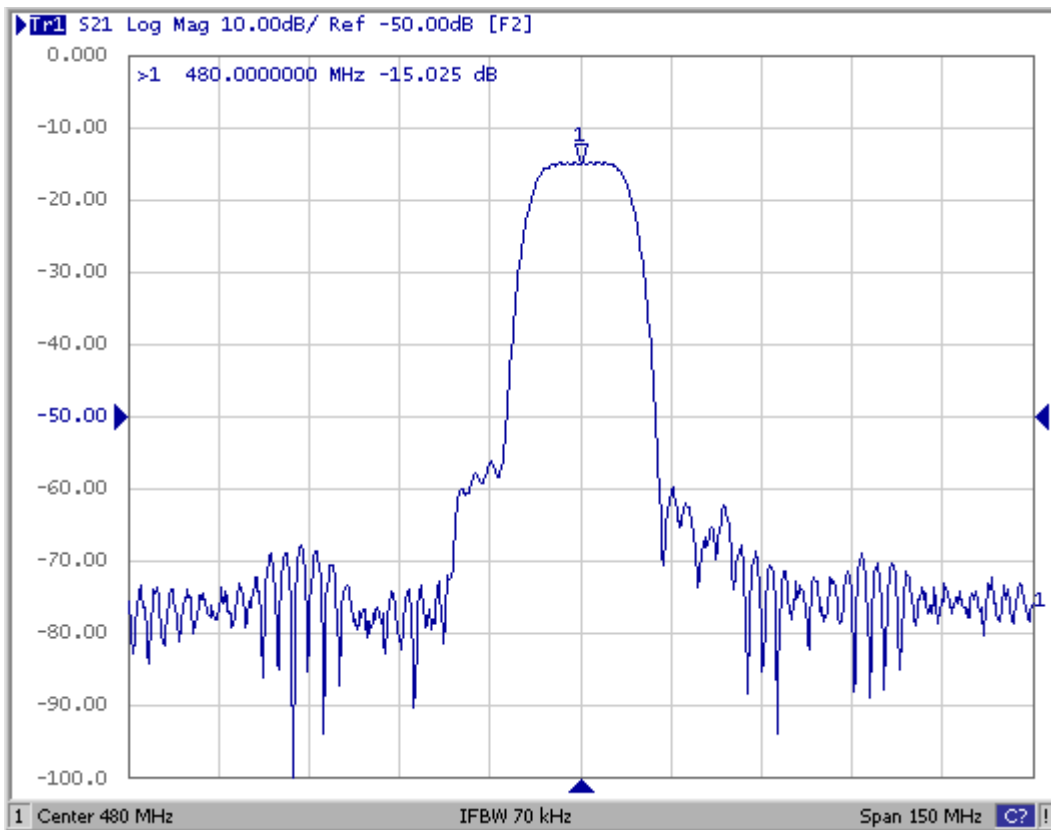
B. ELECTRICAL CHARACTERISTICS:

Ambient Temperature: 25 °

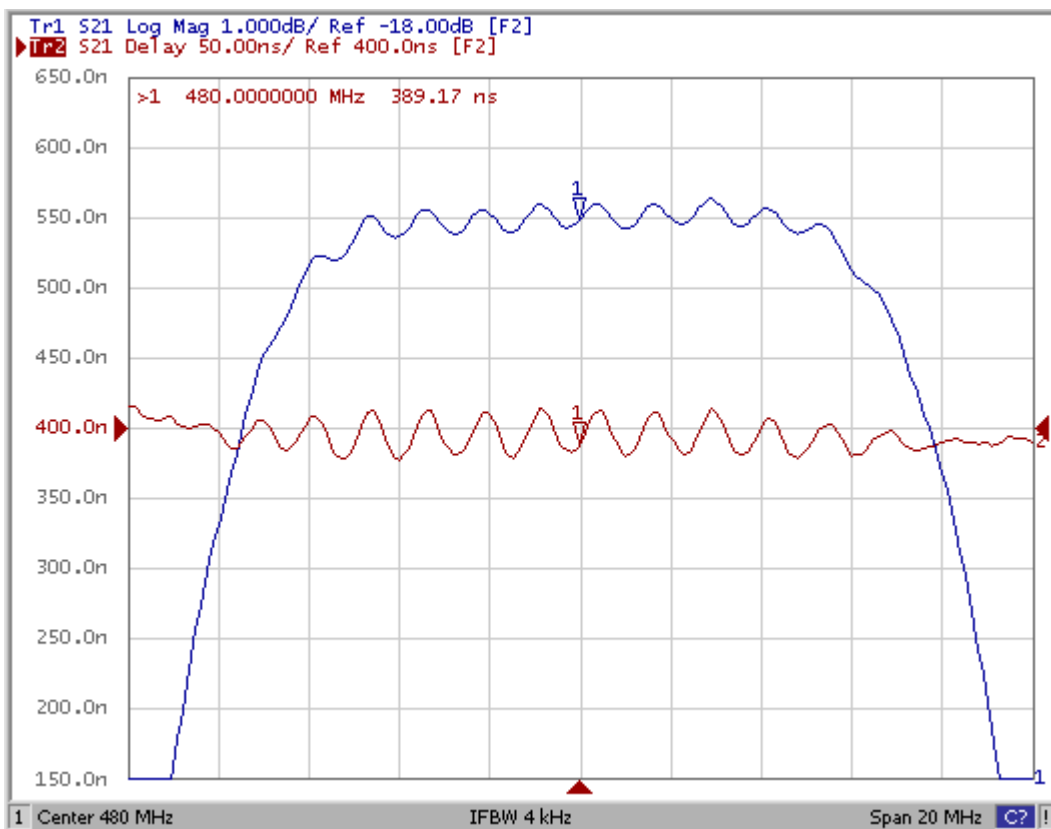
Characteristics	Value			Note
	Min.	Typ.	Max.	
Center frequency F_C MHz	-	480	-	-
Minimum Insertion loss I.L. dB	-	14.7	17.0	-
3 dB Bandwidth MHz	15.0	15.2	-	-
40 dB Bandwidth	-	25.6	27.0	-
Amplitude Ripple ($F_c \pm 5.0\text{MHz}$) dB	-	0.5	1.0	-
Group-delay Ripple ($F_c \pm 6.0\text{MHz}$) nsec	-	35	50	-
Temp Coefficient ppm/°C	-	-18	-	-
Attenuation (Reference level from Minimum insertion loss)				
498~502MHz dB	43	49	-	-

C. FREQUENCY CHARACTERISTICS:

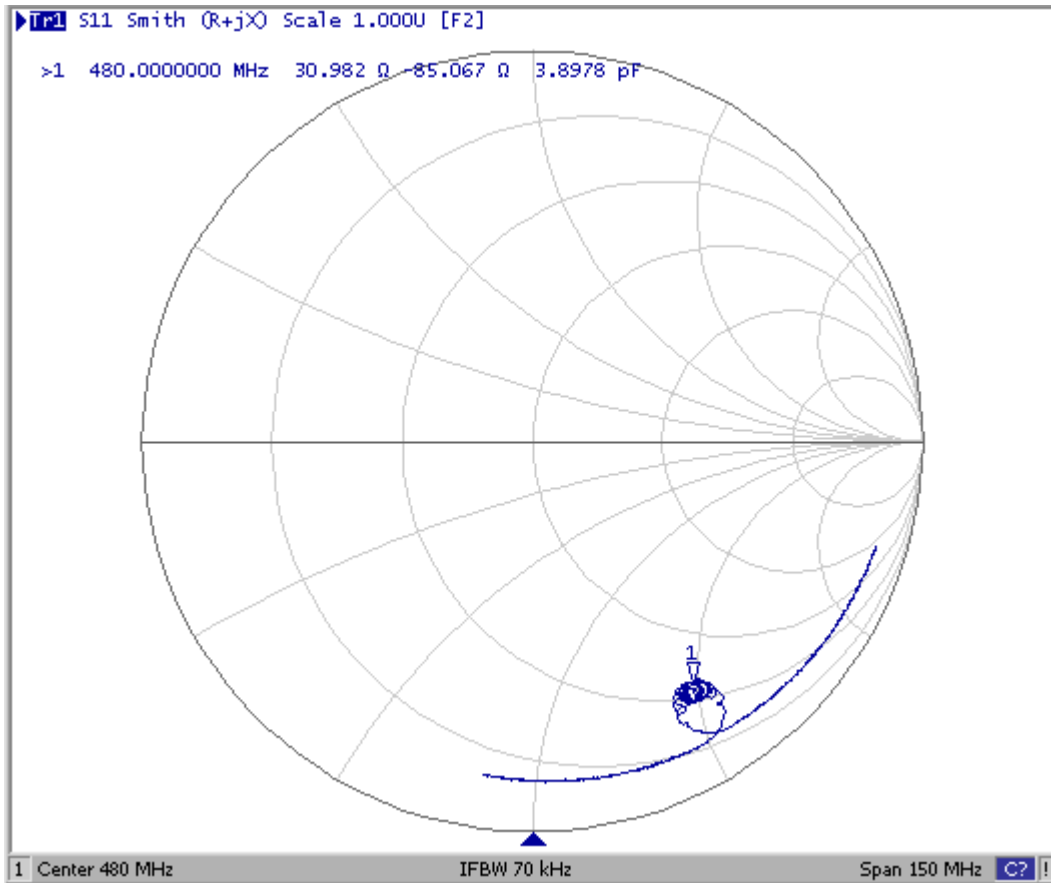
(1) S21 Response:(span 150MHz)



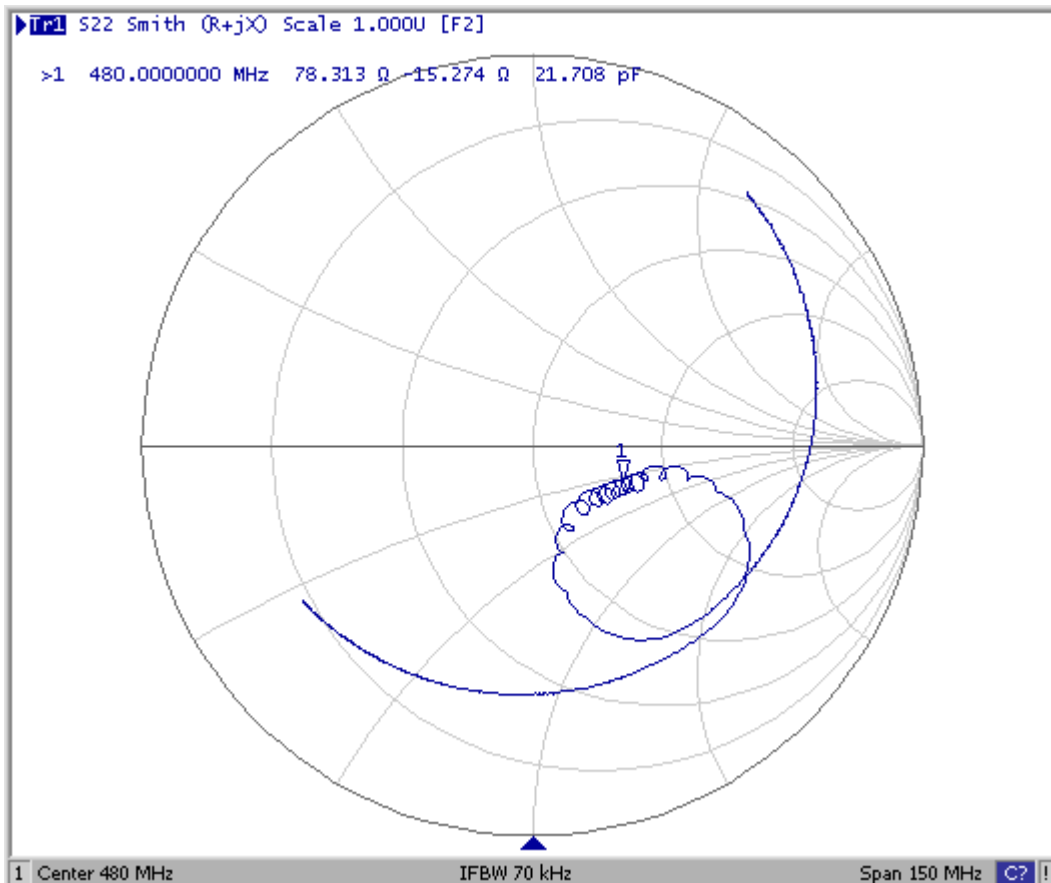
(2) Passband of Response: (span: 20MHz)



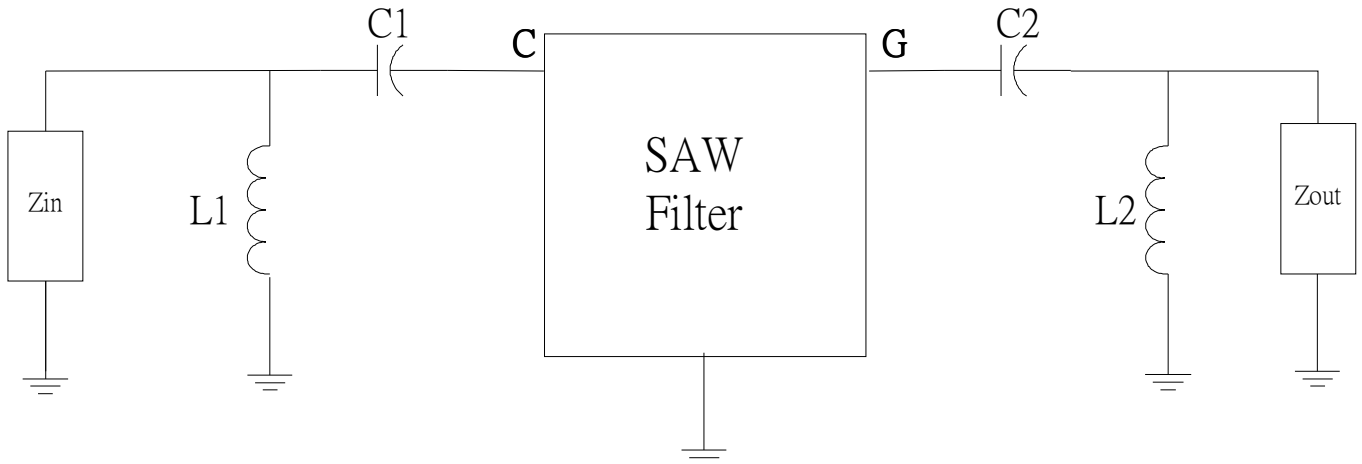
(3) S11 Smith Chart: (span 150MHz)



(4) S22 Smith Chart: (span 150MHz)



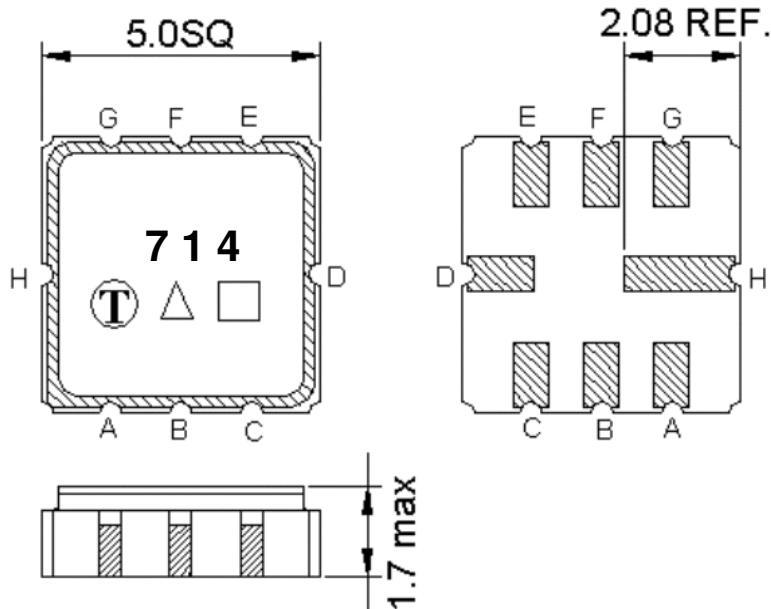
D. TEST CIRCUIT:



Zin and Zout are 50 Ω

L1=27nH, C1=6.8pF, L2=10nH, C2=30pF,

E. OUTLINE DRAWING:



Pin C: RF input

Pin G: RF output

Pin H,D: Case Ground

Pin A, B, E, F: Ground

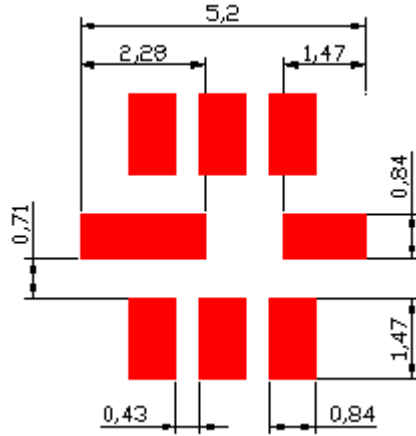
□ : Week Code (Follow the table from planner each year)

Unit : mm

△ : Product / Year Code

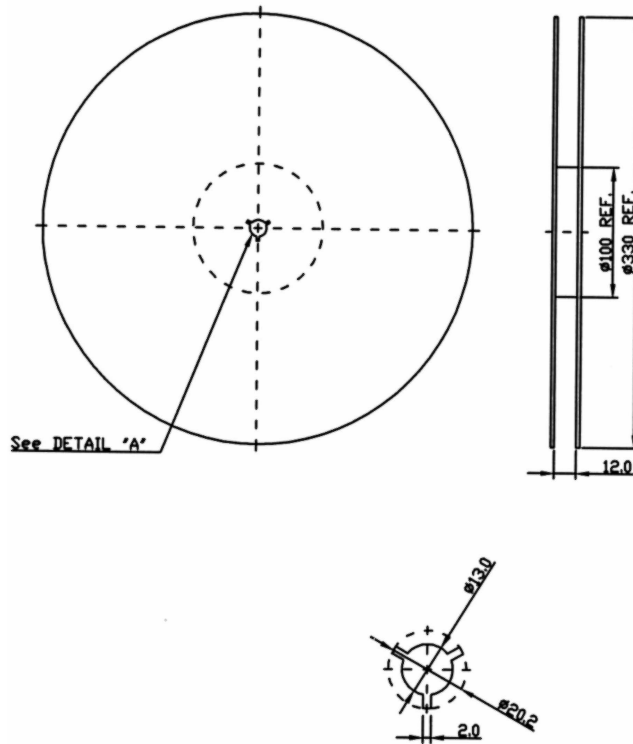
Year	2017 2021	2018 2022	2019 2023	2020 2024
Product Code	B	b	<u>B</u>	<u>b</u>

F.FOOTPRINT:

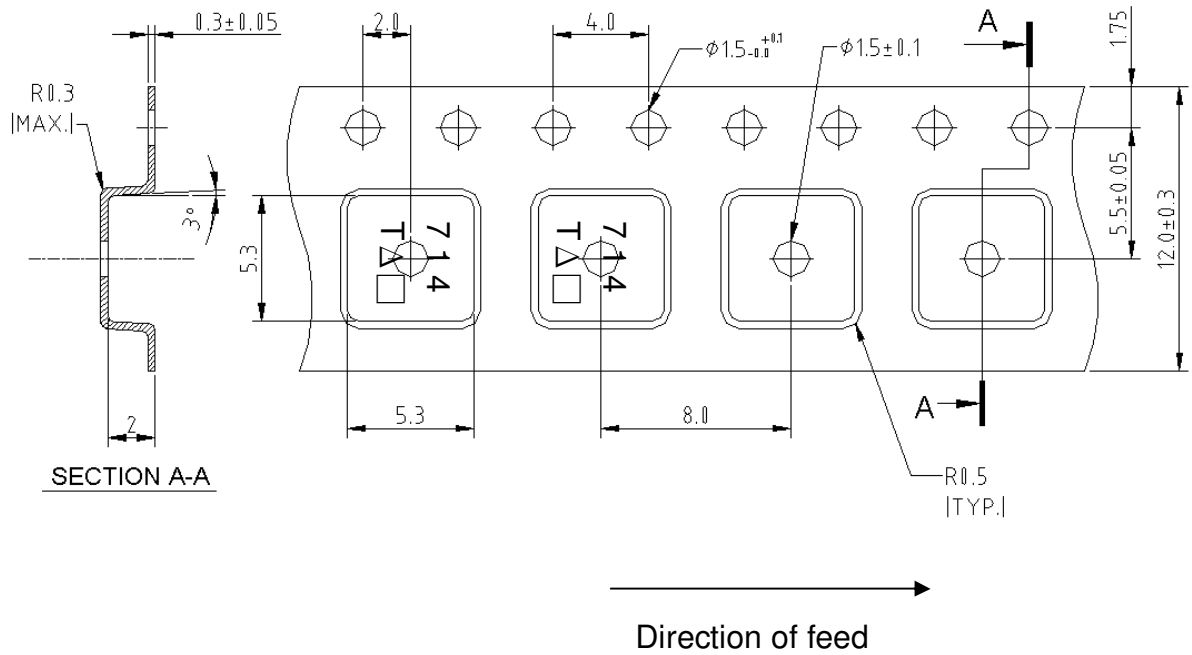


G.PACKING:

1. REEL DIMENSION



2.TAPE DIMENSION



H. RECOMMENDED REFLOW PROFILE:

